


405nm 150mw Single Mode Laser Diode | SM LD |Violet LD |5.6mm Package

405nm LD |150mw Power|TO18 Package

WSLD-405-150m-1

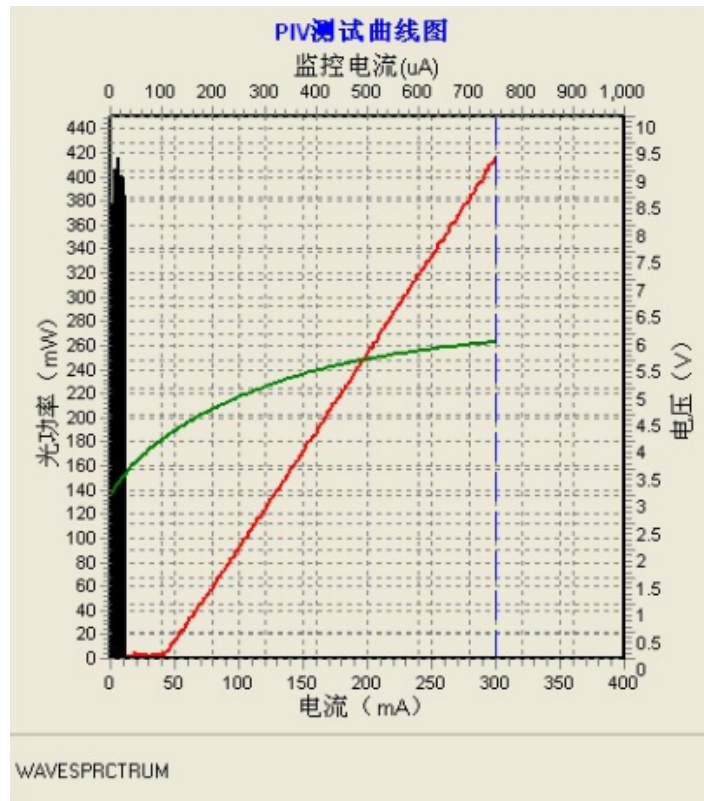
Wavespectrum Laser Group

www.wavespectrum-laser.com

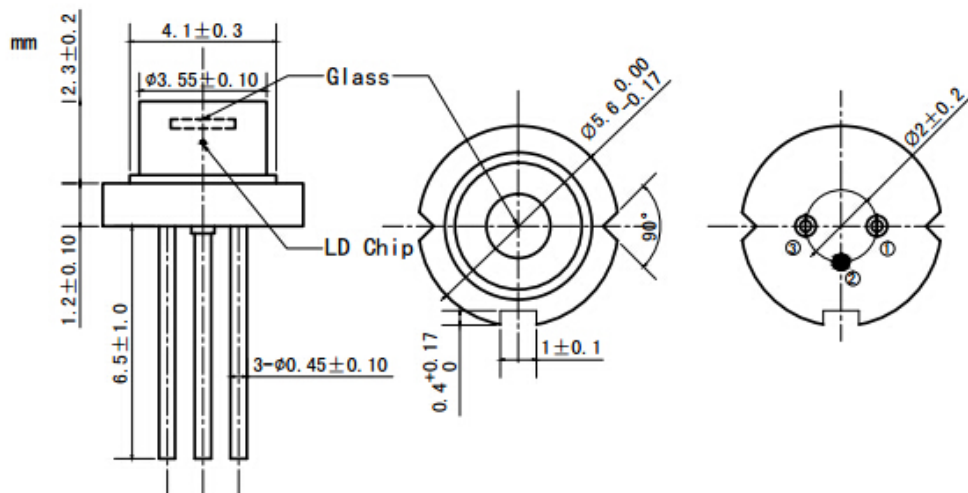
405nm Laser Diode		Wavespectrum Laser Group	
PARAMETER	SYMBOL	VALUE	UNIT
Reverse Voltage	$V_r$	5.0	V
Operating Temperature	$T_{op}$	0~+70	°C
Storage Temperature	$T_{stg}$	-40~+85	°C
Lead soldering temperature (10 sec.)	$T_{is}$	260	°C
<b>Features:</b> <ul style="list-style-type: none"> <li>● 405nm</li> <li>● Single Mode Beam</li> <li>● TO18 Package</li> </ul>			
<b>Applications:</b> <ul style="list-style-type: none"> <li>● Medical Laser Treatment</li> <li>● Printing</li> <li>● Others</li> </ul>			
<b>Specifications</b>	<b>WSLD-405-150m-1</b>		
	Min	Type	Max
Center Wavelength@25°C	400nm	405nm	410nm
Spectral Width (FWHM)	2.0nm		
Output Power	----	150mW	----
Emitter Area	-----		
Beam Divergence (FWHM)	$15^\circ \pm x 7^\circ //$	$19.5^\circ \pm x 9^\circ //$	$24^\circ \pm x 12^\circ //$
Slope Efficiency	1.2mW/mA	1.5mW/mA	1.9mW/mA
Threshold Current (Typ.)	----	40mA	60mA
Operating Current (Typ.)	----	150mA	170mA
Operating Voltage	----	5.0V	6.0V
Package Style	TO18(5.6mm)		



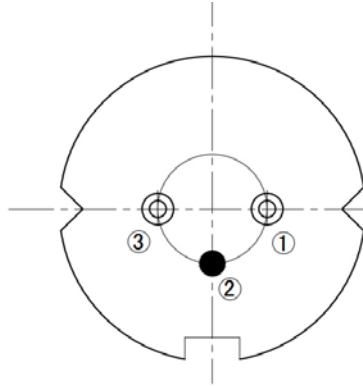
### PVI Curve



### TO18 Package View



**PIN Bottom View:**



<b>1</b>	<b>LD(+)</b>
<b>2</b>	<b>GND</b>
<b>3</b>	<b>LD(-)</b>

Electrically shorten LD module and store in non-extreme conditions.  
 Suggest using the constant current power supply.

